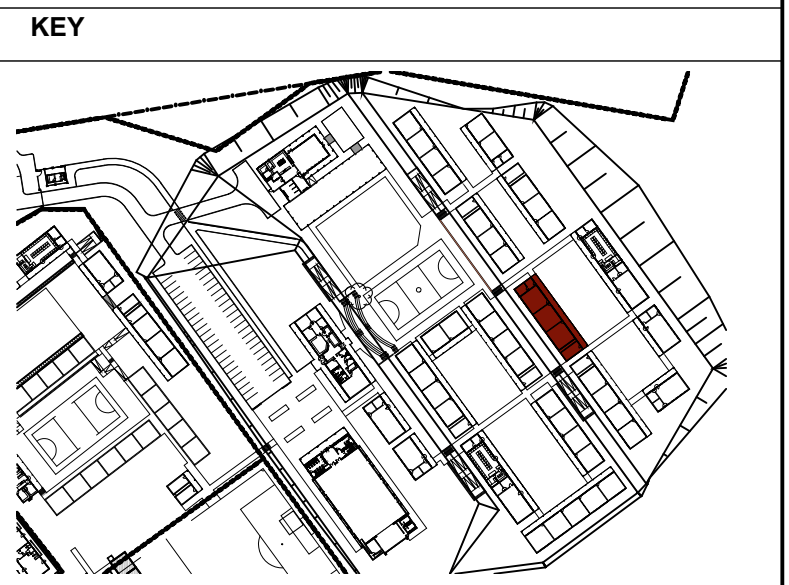



NO.	DATE	REVISION	DRAWN
A	2021-03-01	ISSUED FOR INFORMATION	DW
B	2022-04-13	ISSUED FOR INFORMATION (IFMS) L WINDOW OPENING SECTIONS REVISED L DWG NO. CHANGED FROM 1617 TO 2204	DW
AA	2022-07-28	ISSUED FOR MEASURE L BLOCK LAYOUT CHANGED FROM 3 x CLASSROOM + HOD TO 3 x CLASSROOM + HOD + FEMALE ABUTION F4	DW
AB	2022-08-18	L LEVELS INDICATED USING 100.000 AS T.O.C.	DW

**ISSUED FOR  
APPROVAL**



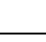

<p><b>PSP</b></p>  <p><b>-mpande - consultants</b></p> <p><b>architects &amp; project managers</b></p>	<p><b>ARCHITECT</b></p> <hr/> <p>13 Cumberland Street, Mithata P.O. Box 7180 Mithata, 51100 Tel: +61-8-932-9182 Fax: +61-8-948-2131</p> <p>18 Loow Gedenkenda Drive, Emmaliand, Johannesburg P.O. Box 9184 Auckland Park, 2006 Tel: 011-486-2635 Fax: 011-486-1125</p> <p>Email: <a href="mailto:pmpande@architect.co.za">pmpande@architect.co.za</a></p>
---	---

ARCHITECTURAL PROFESSIONAL SACAP NUMBERS:  
**H.L. MANTEL SACAP 3045**

<p><b>IMPLEMENTED BY</b></p>
------------------------------

**INDEPENDENT  
DEVELOPMENT  
TRUST**

	SIGNATURE	DATE	SHEET SIZE <b>A1</b>
DESIGNED			SCALE <b>1:100</b>
DRAWN	RJS		STATUS LEGEND
VERIFIED	-	-	I = INFORMATION FA = FOR APPROVAL T = TENDER C = CONSTRUCTION AB = AS BUILT
VALIDATED	-	-	

<p><b>CLIENT</b></p>	<p><b>IMPLEMENTING AGENT</b></p>
 <p>Province of the <b>EASTERN CAPE</b> EDUCATION</p>	

**PROJECT**  
**DOE PORTFOLIO PROGRAMME**  
**ESTABLISHMENT OF NEW SCHOOLS**  
**HILLBROW - SENIOR SECONDARY SCHOOL**  
**PROVINCE: EASTERN CAPE PROVINCE**

---

**DRAWING TITLE**  
**3 CLASSROOMS + H.O.D + FEMALE**  
**ABLUTION F4 (BLOCK S-D)**  
**SECTION-BB & ELEVATIONS**

DRAWING DESCRIPTION
CL-3D +

Stand Co-Ordinates:				
EMIS NUMBER	DISCIPLINE	DRAWING NUMBER	STATUS	REVISION
200500293	ARCH	2204 w01-02/201	FA	AB